

News from the Creek

Friends of Marjorie Kinnan Rawlings Farm, Inc.

Visit our website at: www.marjoriekinnanrawlings.org

Volume 22 Number 1

Winter Quarterly 2019

President's Message

by Barbara Wingo



Welcome to the New Year at Marjorie Kinnan Rawlings' house and farm.

The past year was another productive and interesting one for the Friends, capped by our successful annual meeting. I will never think of a gopher or pilau in the same way again. Thank you, Ann Browning Masters. Another extremely successful event was the premiere of the documentary "Here is Home: Marjorie Kinnan Rawlings and Cross Creek." Be sure to stay tuned for further announcements concerning the use of this documentary.

One 2018 event will be reprised this year. "Marjorie Kinnan Rawlings and St. Augustine" will be presented at the St. Augustine Public Library as part of the Friends of the Main Library Brown Bag Lunch Series at 11:30 a.m. on Wednesday, March 13. (Doors open at 11:00 a.m.) The library is located at 1960 North Ponce de Leon Blvd. in St. Augustine. Light snacks will be served, but attendees may also bring their own brown bag lunches.

Anne Pierce's annual Yearling Trail Walk was cancelled last year so we are happy to announce that it is again on the calendar -- on Saturday, March 2, 2019. Please see the details on page 3 of this newsletter. Also note the article on cooking at the park. In addition to the regular cooking that is described, there will be a campfire cooking demonstration at the park on Saturday, February 23 at 12:30 p.m.

As well as being a year of events, 2019 will be a year of planning and reflection for the Friends and the park. On January 26 the Friends board of directors will have a comprehensive planning retreat. Members of the Friends are invited. If you wish to attend, please call the park office for information.

The holiday season at the Farm, with all the enchantment, magic and mystery of that season, reminded me that Rawlings wrote in *Cross Creek*: "Enchantment lies in different things for each of us." For Rawlings, the grove represented such enchantment:

It is necessary to leave the impersonal highway, to step inside the rusty gate and close it behind. By this, an act of faith is committed, through which one accepts blindly the communion cup of beauty. One is now inside the grove, out of one world and in the mysterious heart of another. . . . to step out of the arched canopy of their jadelike leaves; to see the longer aisles of lichened trunks stretch ahead in a geometric rhythm; to feel the mystery of a seclusion that yet has shafts of light striking through it. This is the essence of an ancient and secret magic.

Rawlings continued:

And after long years of spiritual homelessness, of nostalgia, here is that mystic loveliness of childhood again. Here is home. An old thread long tangled, comes straight again.

As a thank you to the members of the Friends of the Marjorie Kinnan Rawlings Farm, you will find a guest pass and a parking pass printed in this newsletter (page 3). Please come to Marjorie's home and enjoy the magic and mystery of the park in 2019.

MEMBERS OF THE BOARD OF DIRECTORS

Officers 2019

President: Barbara Wingo
Vice President: Carrie Todd
Treasurer: Anne Pierce

CSO Board of Directors

Mickey Angell
Angel Kwolek-Folland
Donna Green-Townsend
Peggy Macdonald
Anne Pierce
Neal and Elaine Spencer
Carrie Todd
Florence Turcotte
Barbara Wingo

Resource Advisory Members

Dan Cantliffe
Roy Hunt
Murray Laurie
Michaelyn Lutttge
Jim Stephens
Kay Williams



Park Manager Message

by Scott Spaulding



This time of year is always a special time on Marjorie's Farm. The weather is cooler so we get to enjoy a welcomed respite from the long hot summer days. It is also a joyous time as we celebrate Christmas, reflect on the past year and bring in the New Year.

Speaking of respite from the summer heat, we have been able to perform some much-needed maintenance to the orange grove this fall and winter. With the help of UF Citrus Club members, volunteers and staff, we removed all the weeds and grass from the tree beds, applied both micro and macro fertilizer and added nutrient rich topsoil to the bed of each tree to help cover any exposed roots. Special thanks to local resident Memree Stuart for the topsoil and to Paynes Prairie State Park for loaning us a dump truck, which made this part of the project possible. Time will tell if our efforts will pay off, but it sure can't hurt anything.

Decorating the House - Decorating Marjorie's House for the Holiday Season is always a treat. This year, we ventured out into the Big Scrub of the Ocala National Forest, not far from Pat's Island, where *The Yearling* was filmed. Then, with permit in hand, we searched out and cut down a 7 foot sand pine for Marjorie's Christmas tree (pictured left). The tree was decorated with period bulbs and ornaments, providing not only holiday cheer, but also something interesting to talk about during our holiday tours. After the tree was adorned, we decorated the house with seasonal fruit, pine boughs, holly and mistletoe. Mistletoe was a favorite of Marjorie's, and she always decorated with it during the holiday.

Marjorie's Holiday Open House was held on December 15th from 5pm to 7pm. With candles and torches lighting the path to the farmhouse, oil lamps inside (pictured left) and fires in the grove, it was a sight to behold. As guests walked through the farmhouse, tour guides were waiting in each room to tell the story that each room holds. Outside, Christmas Carolers and fiddle players filled the air with the songs of Christmas. Hot chocolate and warm cider along with many varieties of cookies, baked that day in the wood burning stove, were served. With 135 guests in attendance, it was a huge success. We thank everyone that joined us to celebrate the season. We especially thank the Friends of Marjorie's Farm for funding the lighting and refreshments, Cross Creek Baptist Church for providing the Carolers and Jim Hughes and Clara Ellison for providing the fiddle music.

Through the looking glass...well not exactly, but I have always thought that windows were the "eyes" to the soul of a house. The "eyes" of Marjorie's farmhouse have seen many changes throughout the years. One of these changes is in the glass itself. In the 1800s, through the turn of the century, glass was made by hand. This process resulted in varying thickness, along with bubbles, lines and waves. Several of the window panes needed to be replaced this year, and with funding provided by the Friends of the Farm, we were able to purchase period-appropriate, handmade glass. Special thanks to volunteers Andy and Terry for installing the glass for us! So the next time you are at the farmhouse, be sure to check out its "eyes" and look for the flaws that are unique to hand blown glass.

We wish you and your family a Happy New Year, and we hope to see you out at the farm real soon!

Yearling Trail Walk, Saturday, March 2, 2019

by Anne Pierce

In 2018, we were unable to take this walk because the Ocala National Forest Service closed Juniper Wilderness for a few weeks during February and March because of black bears in the area. We will try to take this lovely walk again this year.

The Friends of the Marjorie Kinnan Rawlings Farm, Inc., are pleased to sponsor a guided walk of a portion of the Yearling Trail in the Ocala National Forest on Saturday, March 2. Anne Pierce will read passages from *The Yearling* and tell the story of the Long Family in the Big Scrub. The walk is a 3 mile loop trail that includes the sink hole mentioned in the Rawlings novel. The area is rather flat through a mostly pine forest, and the trail is well maintained but sandy in places.

If you go, you will need to wear closed shoes that will allow you to walk a sandy or woody trail and sun protection including a hat, and to have water for the trail and lunch or snacks if you like. We hope to be on the trail by 10:00 a.m. and back to the cars by about 1:00 p.m. Since we will be near Silver Glenn Springs, I plan to eat my picnic lunch at the springs (\$5.50 admission), and walk the "boils" trail (about 1 mile) with another reading from *The Yearling* after lunch. I hope you will plan to come along on this part of the adventure to enjoy your picnic lunch and even a swim if you don't mind the cold water.

Do not plan to bring dogs or children younger than twelve please. Meet me at the Rawlings County Park adjacent to the MKR Historic State Park in Cross Creek at 8:15 a.m. to carpool to the trail. If it is more convenient, you may meet us at the Silver Glenn Springs parking lot at 9:30 a.m. **A reservation is required. Call the Park (352-466-3672) by Monday, February 25, leaving your name, number in your party, and a contact number and email; please indicate where you will meet us (Cross Creek or Silver Glenn Springs). If there are changes in our plans, you will be contacted.**

What's Cookin' at Marjorie's Farm

With the cooler months upon us, we have begun firing up the wood burning stove in the kitchen, not only to help heat that part of the house, but also to cook up some of Marjorie's recipes and some Marjorie-inspired recipes. Some of our recipes will include fresh vegetables right from our winter garden. Special thanks to volunteers Tom and Sue for planting and tending the winter garden again this year, and to volunteers Val and Tish for working so hard in the kitchen along with tour guides Donna and Judy.



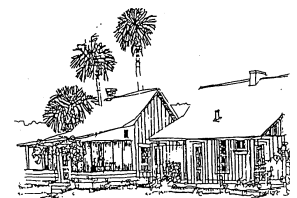
We will be cooking in the kitchen every other Saturday, starting December 22, 2018. These are not cooking demonstrations, but rather an added layer for the senses during scheduled tours that day. These cooking days would be a great time to visit and use your "free visit" pass, exclusive to members and included in this newsletter (below).



Park on Us!

This coupon is good for free parking during your next visit to Marjorie Kinnan Rawlings Historic State Park

Be Our Guest!



This coupon is good for a tour through Marjorie Kinnan Rawlings Historic Home for up to 4 people

Duck Tales on Marjorie’s Farm

by Scott Spaulding

This summer we were down to only eight mallard ducks. Since Marjorie was known to care for upwards of 50, we decided we needed to do something to assist with this endeavor, especially when one of the eight decided to fly off and not return, leaving us with only seven.

If you have never incubated duck eggs before, it is quite a task. Not only does the temperature need to be a constant 99.5° F, but the humidity must be maintained within a range of 55-80% AND the eggs must be rotated 3-7 times per day. No wonder our hens got tired of sitting on eggs...



After some trial and error with a non-rotational incubator, we decided to splurge and bought an auto rotate model. 28 days later, our first egg hatched. We decided to name the first duckling **What-Do-I-Do**, because that was what I said three times fast upon opening the incubator one morning and seeing our first little hatchling peeking up as if to say, “are you my Mommy?” Due to a wing injury, he has since been re-named **Fodderwing**. If you are unfamiliar with that reference, read *The Yearling* to find out!



The other two eggs were each collected at later dates, in fact the second egg hatched eight days after the first, and the third, eight days after the second. For a time we had to keep the two youngest from the oldest because he liked to pick on his younger siblings, and I don’t mean figuratively.

Well, it has been almost two months since the youngest duckling hatched, and it’s getting hard to tell them apart by size, but they do each have their own personality.

So, our duck population has grown to 10. Not quite 50, but we are working on it. Be sure to come by and see our little ducks before they are too big to tell apart from the rest of the flock.



Like us on Facebook at The Friends of the Marjorie Kinnan Rawlings Farm. Our Facebook page shares photos, videos and events related to the Friends of the Marjorie Kinnan Rawlings Farm.

Thank you from the Friends of the Marjorie Kinnan Rawlings Farm, Inc.



Please use this Free Pass for up to **4 (four)** people to enjoy the tour through Marjorie Kinnan Rawlings Historic Home.

One coupon per visit

Coupon is to be presented to your tour guide at the end of the tour



Please use this Free Pass for Parking during your next visit to the Marjorie Kinnan Rawlings Historic State Park

Place in the envelope to be put in the parking lot box.

Thank you from the Friends of the Marjorie Kinnan Rawlings Farm, Inc.

Recent Events



At "Here is Home: Marjorie Kinnan Rawlings and Cross Creek" with (l to r) Ann McCutchan, Sonya Doctorian, Barbara Wingo and Anne Pierce



Marjorie's 122nd Birthday Bash



Annual Meeting - Ann Browning Masters and Scott Spaulding

LIFETIME MEMBERS

- Ginny and Gunter Arndt
- Danny and Judy Baker
- Sheila Barnes
- Catherine Beazley
- Diane E. Beck
- Roger and Linda Blackburn
- Sybil Ann Brennan
- Mary W. Bridgman
- Dan Cantliffe
- Ginger Carter
- Norma Davis
- Patricia Ann Davis
- Sheila Dickison
- John and Balinda Ferree
- Sue Gaintner
- Ordy Greenly
- Robert E. Haines
- J. C. Harrell
- Judith Harris
- Candace Henderson
- John and Phyllis Holmgren
- Roy Hunt
- Deanne Clark & William H. Jeter, Jr.
- Brenda Keith
- Shirley Kiser
- Richard Knellinger, P.A.
- Angel Kwolek-Folland
- Murray Laurie
- Carol Fiddia Laxton
- Shirley Lucas
- Michaelyn Lutdge
- Colleen, Frank and Lana Mahoney
- Janet Matthews
- Ruth Maughan
- Philip S. May, Jr.
- Judith McFadden and Ilene Nathanson
- Robert D. McReynolds
- Eleanor and Andy Merritt
- Elinor N. Midgette
- W.L. Miller
- James R. Nici
- Rebecca Nullier
- Alan Palmer
- Spence Perry
- Marsha Dean Phelts
- John Henry & Margaret Anne Pierce
- Liz Pooley
- Dana Preu
- A.L. Rhinehart
- Art & Edda Ross
- Shirley and Pierre Thompson
- M. List Underwood, Jr.
- Pamela Lydick Whiting
- Colleen Whitlock
- Barbara Wingo

Corporate Members

- Alachua Conservation Trust
- Blue Highway Restaurant
- Horseless Carriage Club of America
- Mansbridge Editing & Transcription

2018 Financial Summary Friends of the Marjorie Kinnan Rawlings Farm, Inc. Anne Pierce, Treasurer

Current Assets (checking, debit, savings)	\$6,738
CDs	\$26,383
Total Assets	\$33,121

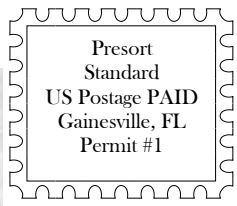
Income Sources 2018

Member Dues	\$3429
House Box and other Contributions	\$708
Chance and Sales fundraising	\$1087
FL Humanities Council Grant	\$500
Interest Income	\$423

Expenses for 2018

Florida Humanities Council Grant	\$4676
Web Site (\$1000 newsletter prep)	\$1139
Park Events Bday, Holiday Open House, etc.	\$427
Newsletter	\$1297
Management & General	\$348
(Mem development, PO Box, Checks, FL Parks mem, etc.)	
Park Related:	\$1468
Fan Repair	\$205
Garden	\$280
Fertilizer for Fruit Trees	\$520
Antique Window Glass	\$307
Miscellaneous	\$156

Thanks to the loyal members of the Friends for your participation during 2018. As you can see from the report above, we depend on dues, contributions, and fundraising to generate funds to support the needs of the Farm and outreach.



Friends of Marjorie Kinnan Rawlings Farm, Inc.
 P.O. Box 337
 Micanopy, FL 32667-0337

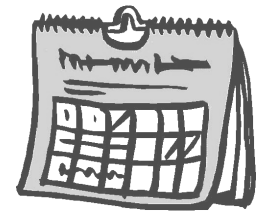
Website: www.marjoriekinnanrawlings.org
 Instagram: @MKRFarm
 Facebook

IS IT TIME TO RENEW YOUR MEMBERSHIP?

Please check your address label. The date that you see on the label is the date your dues are due. If your membership is current, we thank you!

Calendar

- Saturday, **January 26** - Board of Directors retreat
- Saturday, **February 23** - Outdoor Cooking Demonstration, 12:30 p.m.
- Saturday, **March 2** - Yearling Trail Walk (see page 3)
- Wednesday, **March 13** - “Marjorie Kinnan Rawlings and St. Augustine” St. Augustine Public Library, 11:30 a.m., (see page 1)
- Friday, **March 29** - Saturday, **March 30** - Marjorie Kinnan Rawlings Society Conference, Tarpon Springs (see rawlingsociety.org)



Be sure to visit us at www.floridastateparks.org/marjoriekinnanrawlings

<i>Membership Information</i>					
Effective July 1, 2014 new membership dues are as follows					
Type	1yr	3yr	5yr	10yr	Lifetime
Individual	\$25	\$70	\$105	\$200	\$ 450
Family	\$30	\$85	\$130	\$250	\$ 550
Educational	\$30	\$85	\$130	\$250	\$ 550
Corporate	\$55	\$155	\$255	\$500	\$1,000

Please circle type of membership and send with your check to:
 Friends of MKR Rawlings Farm, Inc.
 P.O. Box 337
 Micanopy, FL 32667-0337

Membership in the Friends of Marjorie Kinnan Rawlings Farm, Inc.

We invite you to join or renew your membership in the Citizen Support Organization (CSO) for the MKR Historic State Park. Friends of the Marjorie Kinnan Rawlings Farm, Inc., is a 501©(3) nonprofit organization. All contributions are tax deductible. A copy of the official registration and financial information may be obtained from the Florida Division of Consumer Services by calling 1-800-435-7352 (toll-free within Florida). Registration does not imply endorsement, approval, or recommendation by the State.

Name _____

Address _____

City/State/Zip _____

Phone _____

Email _____

Comments: