

News from the Creek

Friends of Marjorie Kinnan Rawlings Farm, Inc.

Visit our website at: www.marjoriekinnanrawlings.org

Volume 21 Number 4

Fall Quarterly 2018

Looking Forward, Looking Back

President's Message by Barbara Wingo

In my last column I reflected on the changes occurring at the Marjorie Kinnan Rawlings farm, which often requires looking at the past, and our need to look to the future in order to best preserve the farm. I plan to continue this theme in this and future issues of the newsletter. The perpetuation of the Rawlings property reflects the value of preserving the place and the story of the place as well as Rawlings' literary legacy.

In our last newsletter we featured an announcement of the premiere of "Here is Home: Marjorie Kinnan Rawlings and Cross Creek" and an article by documentary filmmaker Sonya Doctorian. The premiere will be held Friday, October 12, at 6:30 p.m. at the Matheson History Museum in Gainesville. It will also feature Marjorie Kinnan Rawlings' biographer Ann McCutchan.

The Annual Meeting of the Friends of the Marjorie Kinnan Rawlings Farm, Inc., the citizen support organization of the Marjorie Kinnan Rawlings State Historic Park, will be held Saturday December 8, at 2:00 p.m. at the park. Because of the unavailability of much of the cast on December 8, we have postponed the reprise of Jim Stephens' play until this spring. However, in addition to our short business meeting and a reprise of the year, we are happy to have Ann Browning Masters who will give a talk on "Marjorie Kinnan Rawlings, *Cross Creek Cookery* and the Menorcans." Please see the article on page 3. The event is open to the public.

The staff at the park has also invited us to its annual holiday party at the park. The party will be held on Saturday, December 15, from 5:00 p.m. to 7:00 p.m.

And speaking of the staff, please enjoy two articles in this newsletter highlighting staff awards. Scott Spaulding, our park manager, has received the statewide Jim Stevenson Resource Manager of the Year Award. Rick Mulligan received the June Employee of the Month for District 2.

Scott has also reinstated the tradition of submitting a park manager's column for our newsletter. Please pay particular attention to what he writes about the Unit Management Plan review. This process is critical for the park, especially with regard to capital improvement projects. We are always interested in the thoughts and suggestions of members of the Friends.

Looking backward, I recently read the first issue of *News from the Creek*, which was published in the fall of 1997. The then-president, Vivian Edgell, wrote that the purpose of forming Friends was "to concentrate our efforts in preserving and maintaining both the house and the farm itself." This continues to be our purpose. She called for volunteers. Of course, we still need volunteers! Please consider volunteering at the park and for events. In any case, I certainly hope to see you attending upcoming Friends' events.



MEMBERS OF THE BOARD OF DIRECTORS

Officers 2018

President: Barbara Wingo
Treasurer: Anne Pierce

CSO Board of Directors

Mickey Angell
Angel Kwolek-Folland
Donna Green-Townsend
Peggy McDonald
Anne Pierce
Neal and Elaine Spencer
Florence Turcotte
Barbara Wingo

Resource Advisory Members

Dan Cantliffe
Roy Hunt
Murray Laurie
Michaelyn Luttge
Jim Stephens
Kay Williams



**Florida Frontiers Series:
Marjorie Kinnan Rawlings**

The Florida Historical Society has released an episode (number 23) in its Florida Frontiers series on Marjorie Kinnan Rawlings.

An interview in the Marjorie Kinnan Rawlings house with Judy Baker, a volunteer at the house, is shown in the photograph. Flo Turcotte, a Friends of the Marjorie Kinnan Rawlings Farm board member, is also featured in the episode.



Park Manager Message

By Scott Spaulding

Greetings,

I hope everyone had a fantastic Summer. We certainly look forward to some cooler weather. Along with the cooler weather, we will be putting together some cooking demonstrations over the wood burning stove. Be sure to keep up to date with our

events by visiting the park's website at <https://www.floridastateparks.org/parks-and-trails/marjorie-kinnan-rawlings-historic-state-park>

Staff and volunteers were busy performing the Annual House Cleaning and Maintenance in August and September. This was my first experience with this process, and let me tell you, what a process it is. Everything, and I mean everything gets gently cleaned from ceiling to floor. The house sure will sparkle for the Fall re-opening. We can always use more volunteers to help, so keep us in mind for next year!

A special Thank You to everyone that made Marjorie's Birthday Celebration on August 11th so successful! What a great time we had commemorating this special occasion.

More ducks on the way...we hope. Our Mallard Duck population is beginning to dwindle, to assist the momma ducks with this endeavor, we have some eggs in the incubator. Of course, there is no substitute for the real thing, but we hope this extra effort will pay off.



Some exciting news, our Unit Management Plan, a 10-year plan which guides and directs the operations of the park, will be up for review next year. This means that we will be working closely with park staff from our District Office and Tallahassee and the Friends of MKR's Farm to determine what we would like to see happen at the park over the next 10 years. Of course, this process will involve our constituents, the public. So be prepared to join us for a public workshop to be held sometime next year, so you too can provide input. By working together, we will set the park's course for the next decade.

Until next time, we wish you all the best, and hope to see you out at the Farm real soon!



Like us on Facebook at The Friends of the Marjorie Kinnan Rawlings Farm. Our Facebook page shares photos, videos and events related to the Friends of the Marjorie Kinnan Rawlings Farm.

Employee of the Month, Rick Mulligan

As a Museum Guide at Marjorie Kinnan Rawlings Historic State Park, we all know that Rick exudes his passion for the Marjorie Kinnan Rawlings Historic State Park in every task he takes on, from giving the historic house tours, to mowing and landscaping, to tenderly caring for the grove and the park's resident ducks and chickens. Rick goes out of his way to share his extensive knowledge and deep appreciation of not only the literary works of Marjorie Kinnan Rawlings, but her farm and life story as well. Rick instantly makes visitors feel welcome and engages them. He has received numerous accolades from visitors attending his house tours and accolades from fellow coworkers. Recently, Rick filled-in for the park ranger who was on leave. When this was extended, he also extended his commitment from three months until the position was filled nine months later. In addition, Rick has had increased responsibilities as park management transitioned. This extra effort was very much appreciated.



Park Manager Scott Spaulding said the following, “Rick’s passion and excitement is contagious, and as the incoming Park Manager, I have gained a great deal of working knowledge about the operation from him; knowledge that I would not have gained otherwise. Rick is truly a team player, with more than just a commitment to the operation, it is a true dedication to the Florida Park Service.”

Rick also has been of inestimable value to the Friends of the Marjorie Kinnan Rawlings Farm, providing much information and wonderful articles for our newsletter! *Thank you and congratulations, Rick.*

Friends Annual Meeting Speaker Ann Browning Masters



Poet and educator Ann Browning Masters will be our featured speaker at the Friends’ Annual Meeting on December 8, at 2:00 p.m., at the Marjorie Kinnan Rawlings Historic State Park. Her topic will be “Marjorie Kinnan Rawlings, *Cross Creek Cookery* and the Menorcans.” She will look at Rawlings’ relationship with the Menorcans of St. Augustine. The Menorcan story and their cooking -- gopher stew and pilaus are examples -- will be discussed.

Dr. Masters is the author of *Floridanos, Menorcans, Cattle-Whip Crackers: Poetry of St. Augustine*. With three great-great aunts recognized as Civil War spies, and a great-great-uncle known from Mayport, Florida, to Cape May, New Jersey, as a rumrunner during Prohibition, she has a colorful family history of stories to tell. But she emphasizes that she also has stories of common life and has focused on saving stories of the Everyman and Everywoman, particularly from her Menorcan heritage. She is in the process of completing a cookbook with the working title of *All the Secrets I know: St. Augustine Cookery Old and New*.

The Annual Meeting is not only open to the membership of the Friends, but also to the public. We hope to see you there!

Holiday Open House at Marjorie Kinnan Rawlings Historic State Park



Saturday, December 15th, 5:00 pm - 7:00pm. Come enjoy some holiday cheer as we tour the old farmhouse at twilight to experience every bit of its holiday charm—the tree, the mistletoe, the fruits, the pine boughs. And surrounded by the fully ripe orange grove, a “place of ancient magic.” Live seasonal music, refreshments and free admission to all. We hope to see you there!

Resource Manager of the Year - Scott Spaulding

Land management is the most important aspect of the Florida Park Service's mission. Yet protecting and preserving the land and restoring habitats to their original nature requires patience and dedication. A habitat restoration project that starts this year may take one or two generations to complete. What starts out looking like a scene of devastation after trees have been chopped down and ground vegetation cleared, slowly - very slowly - is coaxed back to its original habitat and as it does so, the flora and fauna associated with that habitat also return.

This work usually goes unnoticed by the public, but it is recognized at state level. Governor Rick Scott and the Florida Cabinet honored Scott Spaulding, manager of the Florida Department of Environmental Protection's Marjorie Kinnan Rawlings State Park, with the Jim Stevenson Resource Manager of the Year Award for his dedication to habitat restoration and stewardship of state lands.



Each year, land managers from DEP, the Department of Agriculture and Consumer Services' Florida Forest Service, and the Florida Fish and Wildlife Conservation Commission are selected for this award — one of Florida's highest environmental honors.

The Resource Manager of the Year Award was established by DEP in 1992 to recognize the employee who is judged to have made the most significant progress in the stewardship of state lands. It has since expanded to recognize one recipient from each of the three state agencies that manage and protect Florida's conservation lands.

"Scott's tireless work restoring and protecting land for three decades will leave a legacy of environmental stewardship in Florida," said DEP Secretary Noah Valenstein. "I commend Scott for his dedication and service to our state and park system. DEP's greatest resource is our talented staff, and the commitment and determination of land managers like Scott are essential to the protection and preservation of Florida's natural resources."

The award is named for James A. Stevenson, who led the state's ecosystem management, prescribed burning, non-native plant control and springs protection during his long career with DEP's Florida Park Service and Division of State Lands. Recipients are selected by a committee of environmental professionals representing the Sierra Club, Audubon Florida and the Nature Conservancy.

From the Florida State Parks Foundation Newsletter



"Here is Home: Marjorie Kinnan Rawlings and Cross Creek" With Sonya Doctorian and Ann McCutchan Friday, October 12, 6:30 pm, at the Matheson History Museum in Gainesville

The Friends of the Marjorie Kinnan Rawlings Farm, Inc. are presenting the premiere of the documentary "Here is Home: Marjorie Kinnan Rawlings and Cross Creek" at the Matheson History Museum on Friday, October 12. The film was created by documentary filmmaker Sonya Doctorian for the Friends of the Marjorie Kinnan Rawlings Farm under a grant to the Friends from the Florida Humanities Council.

The evening will include a viewing of the documentary, a discussion by the director of her methods, as well as highlights of video interviews with Cross Creek residents who share their 1930s and '40s memories of their neighbor, Mrs. Rawlings. Ann McCutchan, author of the soon-to-be released biography of Rawlings, "The Life She Wished to Live: A Biography of Marjorie Kinnan Rawlings, author of "The Yearling," will also be in attendance to share her research and a reading from the biography.

Mayhaw Jelly

by Barbara Wingo

I was first introduced to mayhaw jelly due to my marriage to a Louisianian and a move to Louisiana. My mother-in-law gave me homemade mayhaw (or may-haw) jelly, and I found it to be delicious with a very subtle fruit taste and a subtle sweetness. The jelly is made from the juice of mayhaw berries. These berries grow on shrubs or small trees in the wetlands of the southern United States. They are small and tart and appear to be unlikely candidates for anything edible. And, in fact, only jelly and syrup are made from the juice of these berries.

How wonderful, then, to read that Marjorie Kinman Rawlings was also fond of mayhaw jelly. In *Cross Creek* Rawlings writes that there “are two jellies here, however, rare and ethereal, that, like the wines of some provinces, may be found only in their own habitat and are not on any market.” The first is the roselle and the other is “may-haw or hawthorn jelly, as delicate as its name.” She notes that she first tasted it, “incongruously, on a bear hunt near the St. John’s River.” She continues, “Marsh Harper brought it, of his wife’s making, as part of his contribution to the hunt’s food supplies.” She notes that it is necessary to pick the may-haws in the “immediate moment of proper ripeness,” for if unripe, they are bitter, and if over-ripe they will not jell.

The mayhaw is part of the broader genus of species commonly called *crataegus* or hawthorn. The haw is the fruit, and May is the month that the fruit is collected. In *Cross Creek* Rawlings relates that she was “obliged to watch the development of the [wild] fruits closely and pick them a trifle green, for the ‘coons and ‘possums and jay-birds are likely to be ahead of me.” Her forbearance in picking pawpaw blooms gave rise to a verse:

I did not break the may-haw bough,
Nor pull the flowering plum,
For ripe fruit follows April’s plow
And falls when locusts drum,
And windy summer nights I know
New-weaned raccoons will come.

I left the fox the pawpaw bud
To ripen near his lair—
But brambleberries strewed the wood,
And they had bloom to spare
I picked a thorny spray and stood
And tucked it in my hair.



Rawlings concludes: “I am the sole admirer of my verse, but I felt a great nobility during its composition.”

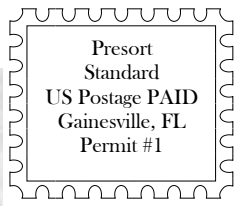
Rawlings’ recipe for mayhaw jelly is found in *Cross Creek Cookery*, where she again notes the unusual circumstances of her first taste of this “delicate rosy-pink jelly.”

LIFETIME MEMBERS

Ginny and Gunter Arndt
Danny and Judy Baker
Sheila Barnes
Catherine Beazley
Diane E. Beck
Roger and Linda Blackburn
Sybil Ann Brennan
Mary W. Bridgman
Dan Cantliffe
Ginger Carter
Norma Davis
Patricia Ann Davis
Sheila Dickison
John and Balinda Ferree
Sue Gaintner
Ordy Greenly
Robert E. Haines
J. C. Harrell
Judith Harris
Candace Henderson
John and Phyllis Holmgren
Roy Hunt
Deanne Clark & William H. Jeter, Jr.
Brenda Keith
Shirley Kiser
Richard Knellinger, P.A.
Angel Kwolek-Folland
Murray Laurie
Carol Fiddia Laxton
Shirley Lucas
Michaelyn Luttge
Colleen, Frank and Lana Mahoney
Janet Matthews
Ruth Maughan
Philip S. May, Jr.
Judith McFadden and Ilene Nathanson
Robert D. McReynolds
Eleanor and Andy Merritt
Elinor N. Midgette
W.L. Miller
James R. Nici
Rebecca Nullier
Alan Palmer
Spence Perry
Marsha Dean Phelts
John Henry & Margaret Anne Pierce
Liz Pooley
Dana Preu
A.L. Rhinehart
Art & Edda Ross
Shirley and Pierre Thompson
M. List Underwood, Jr.
Pamela Lydick Whiting
Colleen Whitlock
Barbara Wingo

Corporate Members

Alachua Conservation Trust
Blue Highway Restaurant
Horseless Carriage Club of America
Mansbridge Editing & Transcription



Friends of Marjorie Kinnan Rawlings Farm, Inc.
 P.O. Box 337
 Micanopy, FL 32667-0337

Website: www.marjoriekinnanrawlings.org
 Instagram: @MKRFarm
 Facebook

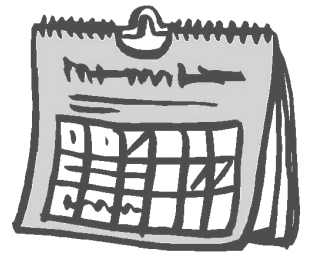
IS IT TIME TO RENEW YOUR MEMBERSHIP?

Please check your address label. The date that you see on the label is the date your dues are due. If your membership is current, we thank you!



Calendar

- October 12th, **MKR Documentary Premiere**
 Matheson History Museum, Gainesville 6:30pm (page 4)
- December 8th, **Annual Membership Meeting (Public Welcome!)**
 Marjorie Kinnan Rawlings Historic State Park 2pm (see page 3)
- December 15th **Holiday Open House**
 Marjorie Kinnan Rawlings Historic State Park 5pm - 7pm (page 3)



Be sure to visit us at www.floridastateparks.org/marjoriekinnanrawlings

<i>Membership Information</i>					
Effective July 1, 2014 new membership dues are as follows					
Type	1yr	3yr	5yr	10yr	Lifetime
Individual	\$25	\$70	\$105	\$200	\$ 450
Family	\$30	\$85	\$130	\$250	\$ 550
Educational	\$30	\$85	\$130	\$250	\$ 550
Corporate	\$55	\$155	\$255	\$500	\$1,000
<p>Please circle type of membership and send with your check to:</p> <p style="text-align: center;">Friends of MKR Rawlings Farm, Inc. P.O. Box 337 Micanopy, FL 32667-0337</p>					

Membership in the Friends of Marjorie Kinnan Rawlings Farm, Inc.

We invite you to join or renew your membership in the Citizen Support Organization (CSO) for the MKR Historic State Park. Friends of the Marjorie Kinnan Rawlings Farm, Inc., is a 501©(3) nonprofit organization. All contributions are tax deductible. A copy of the official registration and financial information may be obtained from the Florida Division of Consumer Services by calling 1-800-435-7352 (toll-free within Florida). Registration does not imply endorsement, approval, or recommendation by the State.

Name _____

Address _____

City/State/Zip _____

Phone _____

Email _____

Comments: